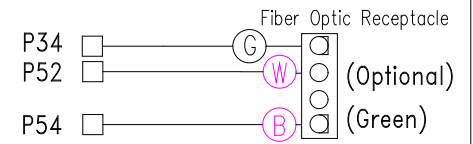
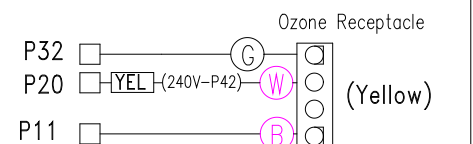
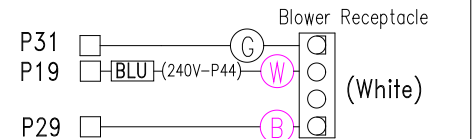
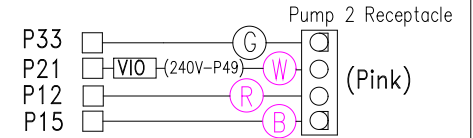
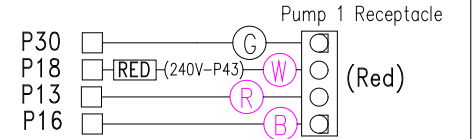
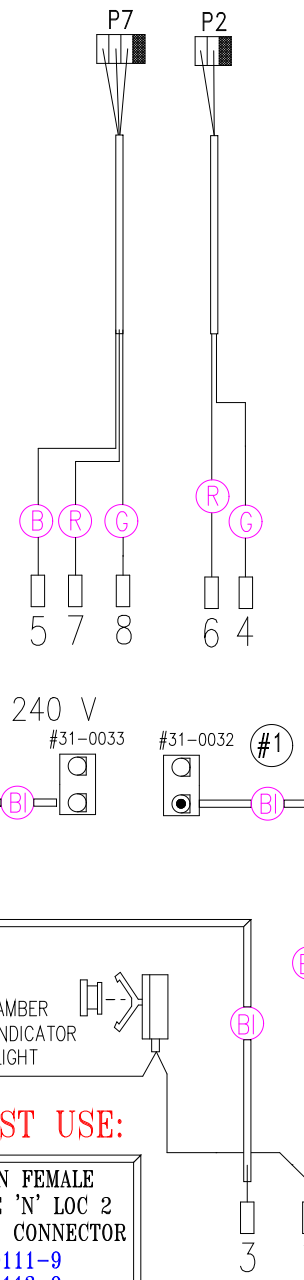
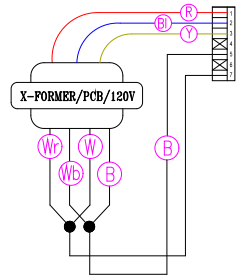
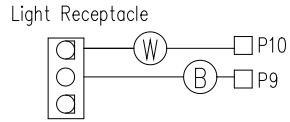
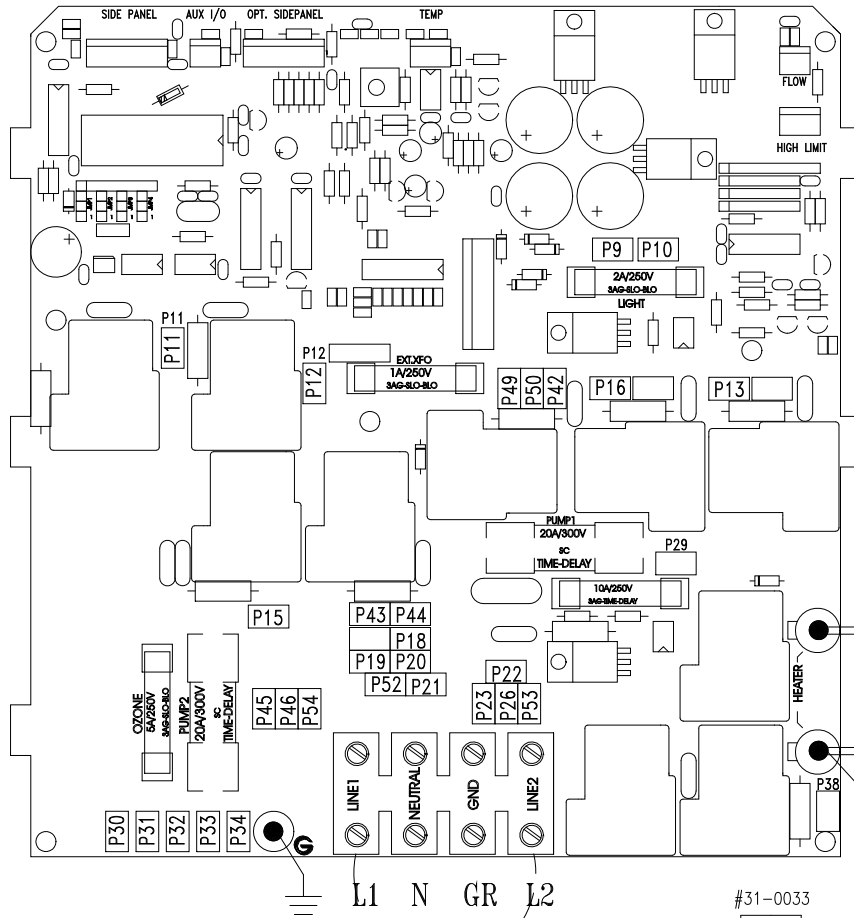


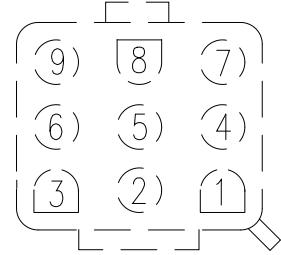
LEGEND

- - 1/4" QUICK CONNECT
- ▢ - 1/4" QUICK CONNECT PIGGYBACK
- ⊞ - FORK CONNECTOR
- - RING CONNECTOR
- ◻ - SOCKET CONNECTOR
- △ - PIN CONNECTOR

33-0018-R6



MUST USE:
 9 PIN FEMALE
 MATE 'N' LOC 2
 PLUS CONNECTOR
 31-0111-9
 31-0113-9



HYDRO-QUIP
 CORONA, CA (909) 273-7575

Manufacture Notes: EX: RED DENOTES THE COLOR OF HEAT SHRINK USED.

- #1 For 240V Operation of Heater, Plug Must be Installed into 240 Receptacle
 For 120V Operation of Heater, Plug Must be Installed into 120 Receptacle
- #2 Line 1 and Line 2 Need to be SEPARATED for 240V Operation
 Line 1 and Line 2 Need to be CONNECTED for 120V Operation

Dwg. No.
H556A0-DKPQY-S5
 Reviewed By:

Drawn
 CDV
 Date
 6.25.01

Diagram No.
6205

Wire Color Code	
B - Black	G - Green
Br - Brown	Bl - Blue
R - Red	V - Violet
O - Orange	W - White
Y - Yellow	Gr - Gray